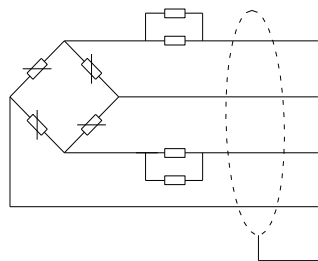




## Load Cell Specification

Type	LAB-H-60kg-C3-2.0-C42		
Maximum Capacity (E <sub>max</sub> )	kg	60	
Accuracy Class	C3		
Maximum number of load cell intervals(n <sub>max</sub> )	3000		
Min.LC verific.interval(V <sub>min</sub> )	g	E <sub>max</sub> /10000	
Rated output	mV/V	2.0±0.2	
Zero balance	%R.O.	±2	
Combine error	%R.O.	±0.03	
Minmun dead load output	%R.O.	±0.0167	
Temp.Effect on Output	+20°C~+40°C	%R.O./10°C	±0.0175
	-10°C~+20°C		±0.0117
Temperature Compensated For Zero	%R.O./10°C	±0.0140	
Input resistance	Ω	405±10	
Output resistance	Ω	350±5	
Insulation Resistance	MΩ(50VDC)	≥5000	
Temperature Compensated	°C	-10to+40	
Operating Temperature Range	°C	-20to+60	
Excitation,recommended	VDC	5~12	
Excitation,maximum	VDC	18	
Safe overload(E <sub>im</sub> )	% of E <sub>max</sub>	150	
Protection Class	IP65		
Material of measuring_element	Aluminum alloy		
Cable,and length	cm	42(φ4mm)	

### Color code of cable



E+: Red  
 S+: Green  
 E -: Black  
 S -: White  
 Shield not conected to load cell body

### Dimensions

